



Plusline ES Small

Plusline ES Small 118mm 2y 400W R7s 230V 1BB

Mains-voltage halogen linear lamp with superior quality and reliability. Offers very long lifetime and crisp halogen light. Ideal solution for decorative luminaires and for security or task lighting floodlights.

Product data

General Information	
Cap-Base	R7S [R7s]
Operating Position	UNIVERSAL [Any or Universal (U)]
Nominal Lifetime (Nom)	2000 h
Switching Cycle	8000X

Light Technical	
Luminous Flux (Nom)	8600 lm
Luminous Flux (Rated) (Nom)	8600 lm
Correlated Color Temperature (Nom)	2900 K
Luminous Efficacy (rated) (Nom)	21.5 lm/W
Color Rendering Index (Nom)	100
LLMF At End Of Nominal Lifetime (Min)	80 %

Operating and Electrical	
Power (Rated) (Nom)	400.0 W
Lamp Current (Nom)	1.74 A
Wattage Equivalent	500 W
Starting Time (Nom)	0.0 s
Warm Up Time To 60% Light (Nom)	instant full light
Power Factor (Nom)	1
Voltage (Nom)	230 V

Controls and Dimming	
Dimmable	Yes

Mechanical and Housing	
Bulb Finish	Clear

Approval and Application	
Energy Efficiency Label (EEL)	D
Energy Consumption kWh/1000 h	400 kWh

Luminaire Design Requirements	
Bulb Temperature (Max)	900 °C
Pinch Temperature (Max)	350 °C

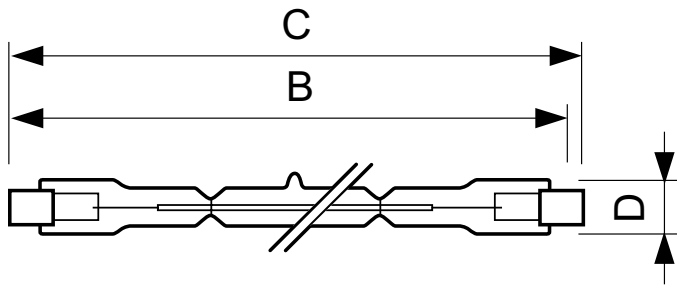
Product Data	
Full product code	872790085389600
Order product name	Plusline ES Small 118mm 2y 400W R7s 230V 1BB
EAN/UPC - Product	8727900853896
Order code	924572144210
Numerator - Quantity Per Pack	1
Numerator - Packs per outer box	100
Material Nr. (12NC)	924572144210
Net Weight (Piece)	9.000 g

Plusline ES Small

ILCOS Code

HDG//RS-400-230-R7s-114,2

Dimensional drawing



Product	D (max)	B (max)	B	B (min)	C (max)
Plusline ES Small 118mm 2y 400W R7s 230V 1BB	11 mm	115.8 mm	114.2 mm	112.6 mm	118 mm

DESmall 118mm 2y 400W R7s 230V T11 CL

